



<u>Architect</u>	<u>Completion</u>
Anais Architektur	2019
<u>Address</u>	<u>Size</u>
Landstrasse 150b	11,540 m²
7250 Klosters-Serneus	<u>Ages</u>
Switzerland	4-15
<u>Client</u>	<u>Classrooms</u>
Gemeinde Klosters	25
<u>Kind of school</u>	<u>Sustainable features</u>
Kindergarten, primary and secondary school	Minergie P standard, wood chip heating

The Klosters-Platz school complex is built on a steep slope between the cantonal road and the train station, next to the village structure and cemetery. Its buildings are designed to fit well with the landscape. The larger building is for the primary school and kindergarten, while the smaller building is for the secondary school, ensuring separate environments for different age groups. Publicly accessible areas like the craft room and teachers' lounge are in the basement, with a double gymnasium and auditorium on the lower ground floor. The buildings use concrete to reflect local design traditions, and their façades play with light and shadow. A canopy was not included so the buildings can weather naturally. Extra-high areas create unity, and smooth concrete contrasts with wood features in classrooms. Larger, divisible classrooms allow flexible space usage. The architecture provides a vibrant backdrop for school activities. The building meets the Swiss Minergie P-standards for energy efficiency, using solid concrete walls to manage heat in the winter and cooling at night in the summer.

Learn-155

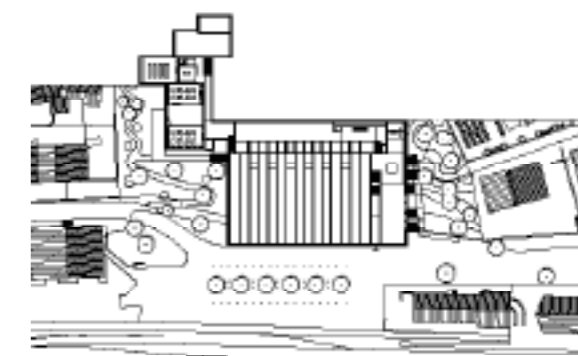
This information will be printed in our Index

Office name: **Anais Architektur**, Nina Bühlmann

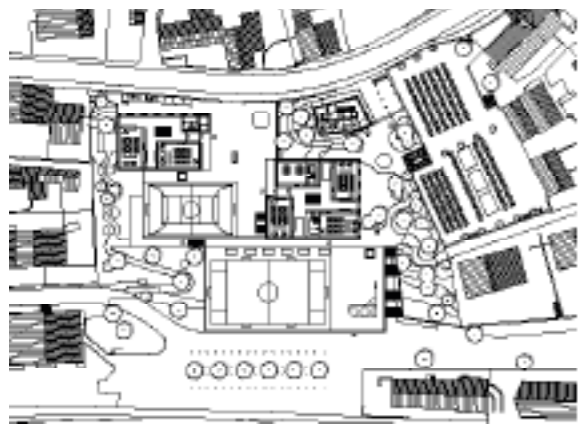
Office homepage: www.anais-architektur.ch

Photographer name: **Ralph Feiner**

Photographer homepage: www.feinerfotografie.ch



Project **School Facility**
Klosters Platz



- a Basement
- b Sports hall
- c Basement
- d Ground floor
- e Under the roof
- f Development of upper secondary school
- g Kindergarten
- h Primary level
- i Cabinet fronts
- j Development of day structure

d



e f



g



h i



i